

# Common leaf spot and pseudopeziza leaf spot

## Common leaf spot

### Summary

This leaf disease is caused by the fungus *Leptosphaerulina trifolii* and is very similar to pseudopeziza leaf spot (below). However; the pathogen only sporulates on the dead tissue in the bottom of the pasture.



Common leaf spot of clover.

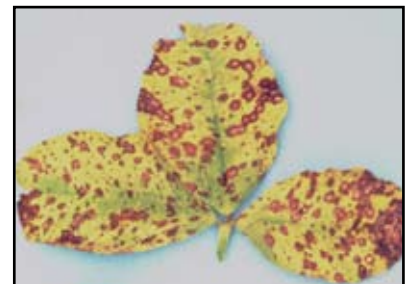
## Pseudopeziza leaf spot

### Summary

Pseudopeziza leaf spot (PLS) is caused by the fungus *Pseudopeziza trifolii*, mainly in autumn and winter in the North Island. Quality of conserved feed can be affected.

### Identification

First symptoms are buff coloured, circular spots varying in size, with a darker fringe, on the upper surface of the leaves. In severely infected swards leaves can curl up and turn brown. PLS occurs mainly in cool, moist, winter conditions and is exacerbated by infrequent grazing.



Pseudopeziza leaf spot of clover. (Photo: MAF, Lincoln)

### Spread

Spores produced by the fungus are forcibly ejected into the air, where they spread infection to new sites.

### Prevention and management

Timely grazing or cutting minimises damage of infected stands.